



650 Electric VTOL FIXED WING UAV

Max. Payload 15kg

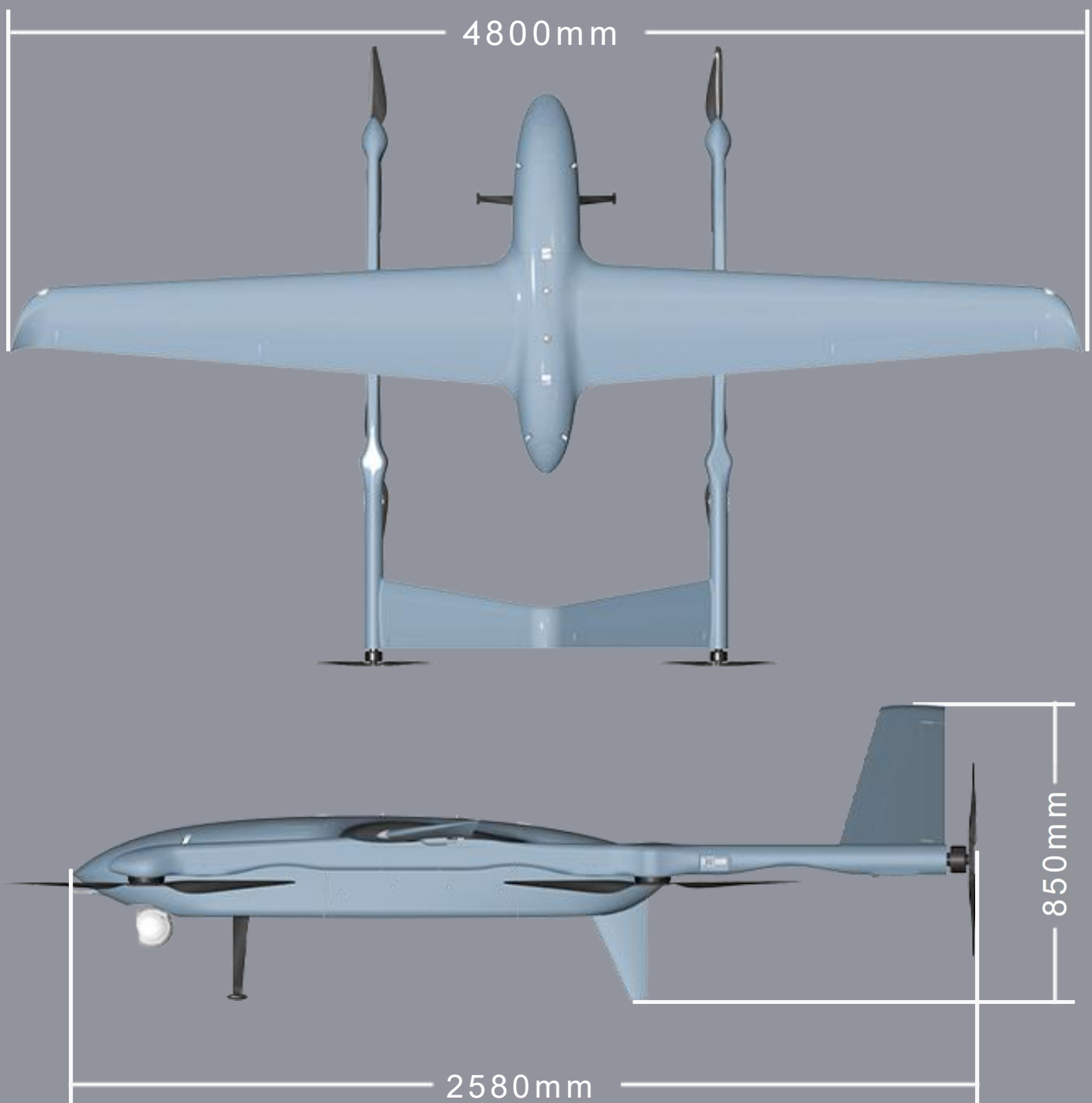


**Surveillance/Cargo delivery
Emergency communication relay**

G50 pure electric vertical take-off and landing(VTOL) fixed-wing UAV is newly launched by GY UAV in 2022, which carries a standard take off weight of 50kgs.

It adopts a composite aerodynamic layout of quad-rotors and fixed wings, combines the advantages of VTOL of the quad-rotors models and the long range of the fixed-wing models. Flexible and can adapt to various complex take-off and landing conditions.

Designed with dual tail propulsion, main and auxiliary dual payload cabin, easy to use, quiet and pollution-free, and meets the flight condition at high altitude.



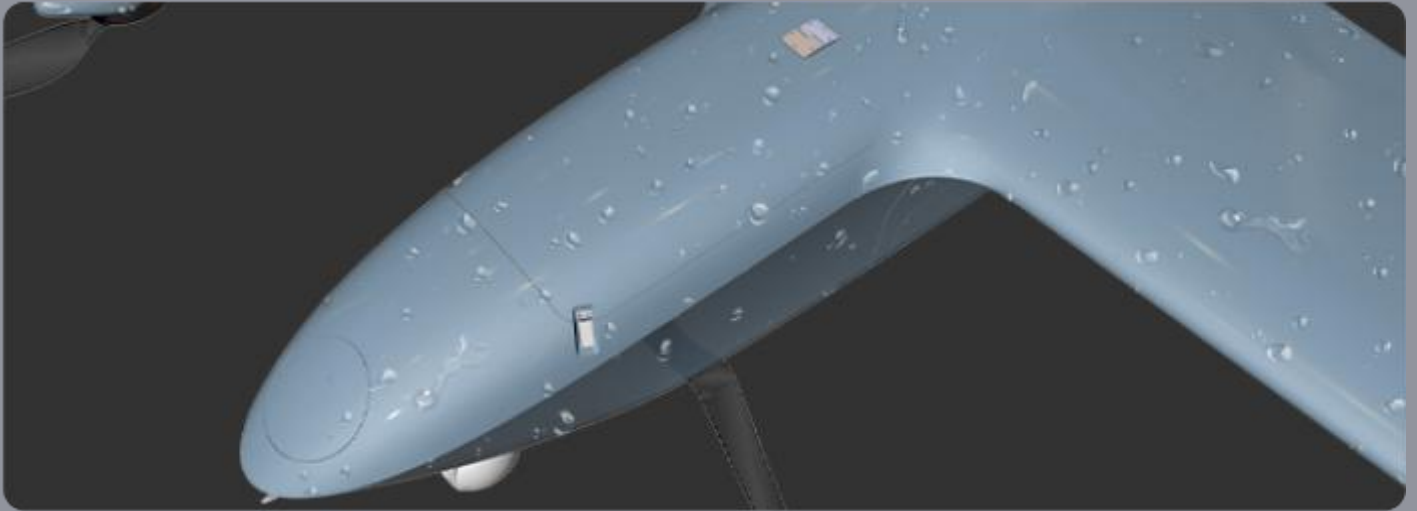
Flight Specification

Standard Take-off Weight	50kg
Max. Payload Weight	15kg
Cruise Speed	82km/h
Max. Flight Speed	120km/h
Control Radius	50km
Max. Climb Speed	6m/s
Max. Descend Speed	5m/s
Max. Altitude AMSL	4200m
Max. Wind Resistance	Level 7
Operating Temperature	-10~60°C
Max. Flight Time	≥270min
Flight Distance	≥350km
UAV Dimensions	4800*2580*850mm
Mount	Pod、Lidar、SAR、Cargo delivery

Design Features >

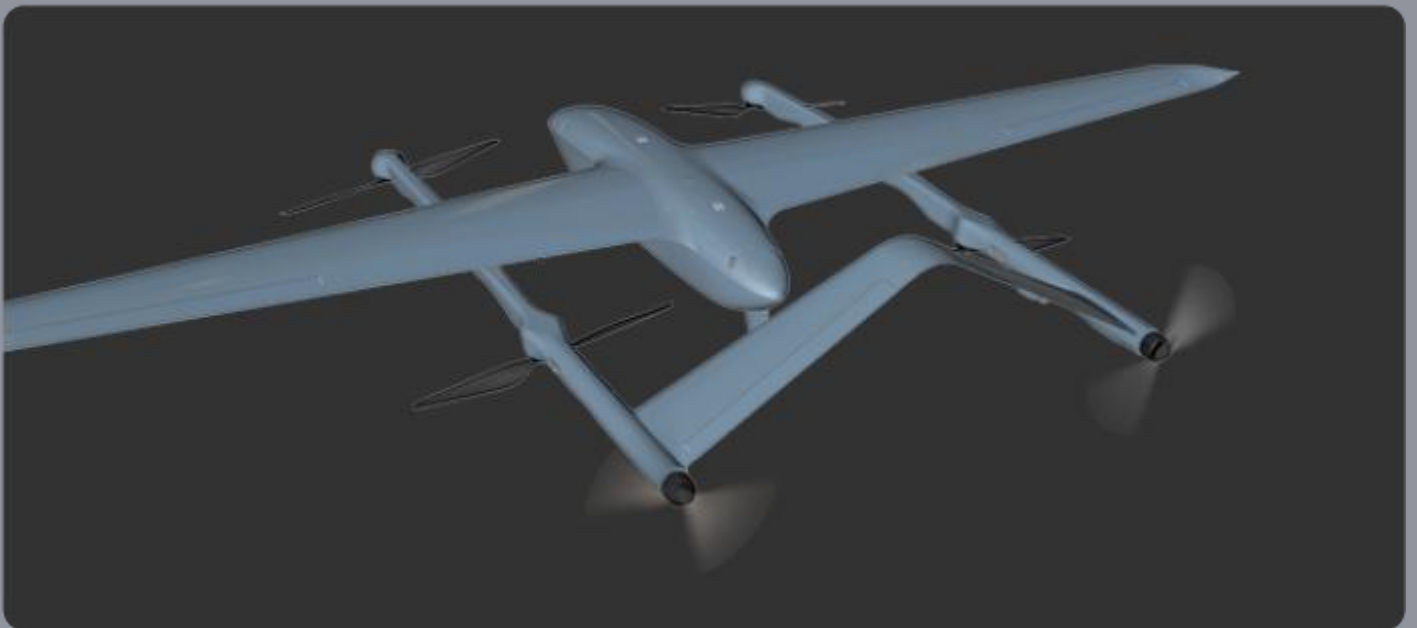
Good Waterproof Performance

Waterproof design can meet the flight under complex climatic conditions.



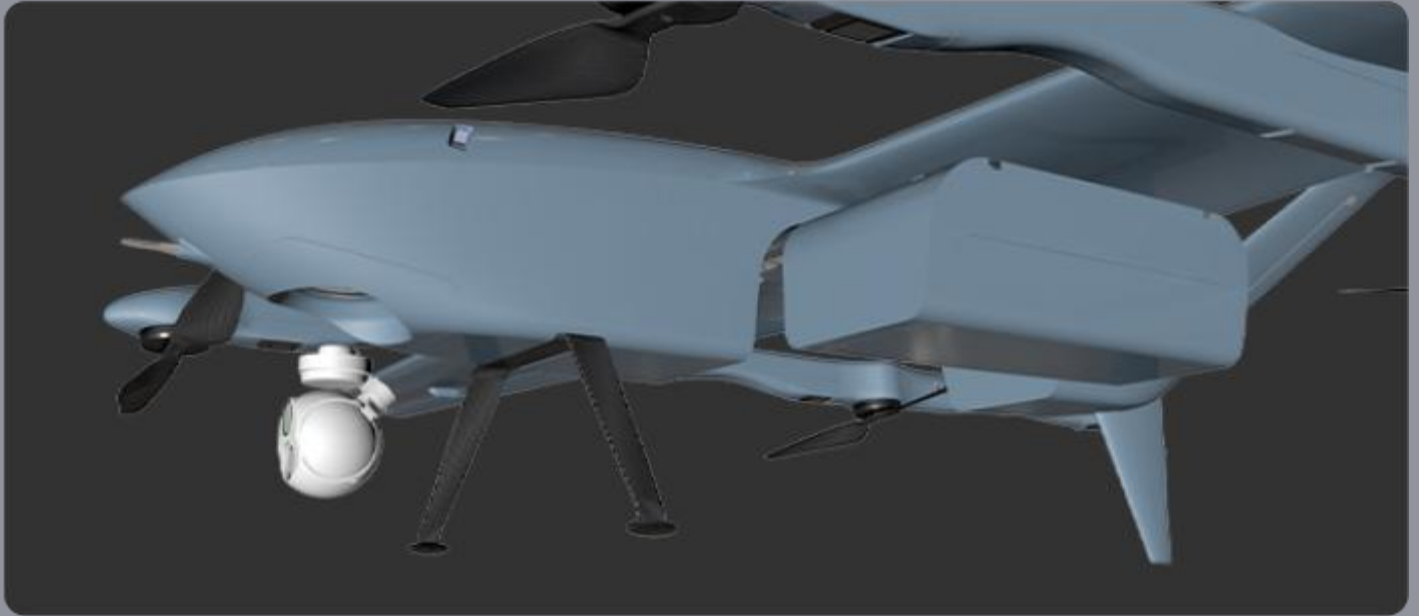
Dual Motor

The dual-motor of Fixed-wing mode, higher climbing rate, and better reliability.



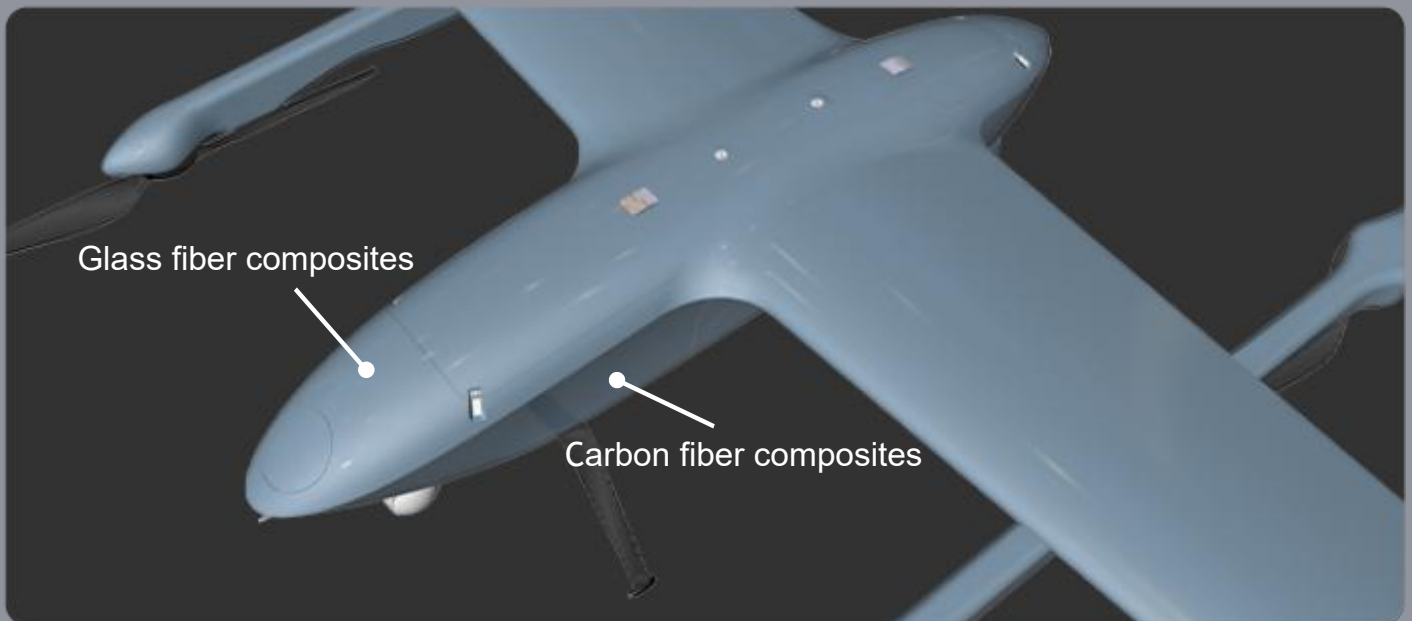
Dual Payload Cabin

Designed with main and auxiliary dual payload with unobstructed front photo-electricity.



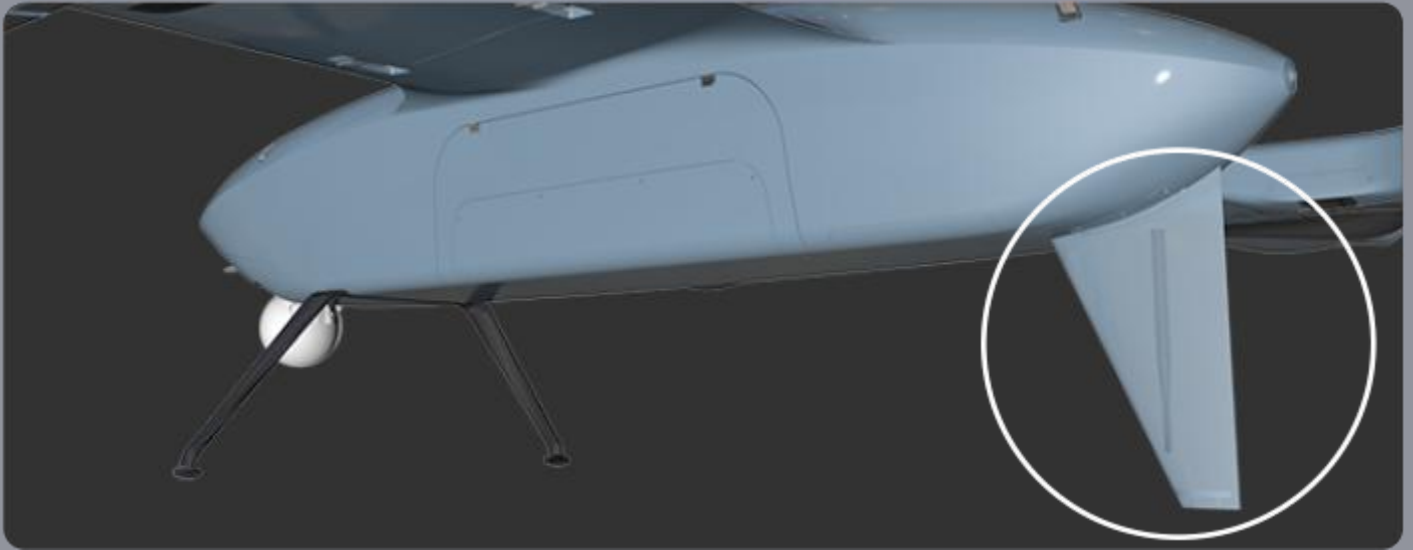
Processed with Composite Material

Built-in GPS/RTK, satellite search without obstruction.



Unobstructed Antenna Design

The main antenna is integrated into the landing gear, reducing drag and providing a clean, unobstructed view.



Dual GPS Module

Built-in dual GPS and Dual RTK ceramic antennas for centimetre-level accurate positioning.



Night Flight

G50 adopts the design of red light on the left-wing, green light on the right-wing, which can better meet the needs of night flights, improve security and identification as well.

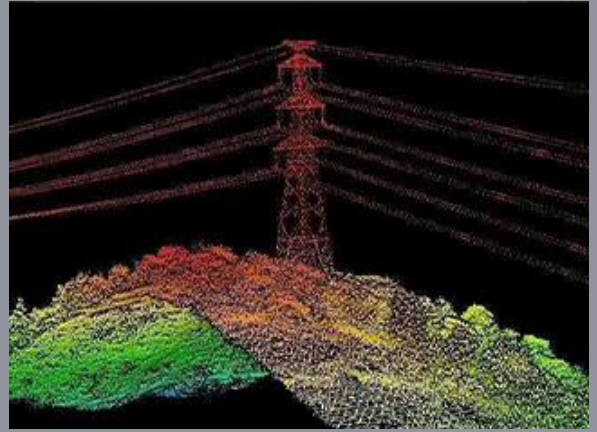


Industry Applications

Industrial UAV are being integrated with traditional industries to form a new mode of "+ UAV" usage in several fields such as map mapping, power patrol, security monitoring, and emergency disaster relief.



Emergency



Electric Power



Police



Water Conservancy



Cargo delivery



Transportation

More Reliable · More Efficient